



Ecodynamics

When Tom Pescatore moved to the San Luis Valley from Luxembourg in early 2001 he was fulfilling a lifelong dream.

Educated as a mechanical engineer, he ran a truck and body shop specializing in cranes, excavators and other large equipment. Tom oversaw the 15-employee Mitsubishi car and truck dealership for several years. He said, "With the fall of the Berlin Wall, I began to see a shift in the European car market."

Not one to ignore the potential financial downside of impending change, Tom decided to expand a sideline business. He had been a pilot for several years. He said, "I had a little airplane and I did some of the maintenance myself. A friend asked if I could do some maintenance on his plane. Then an airplane club called and asked if I could do the maintenance on their planes so I hired a guy to do maintenance work."

With his fixed base operation growing, Tom stepped away from the truck and car business and bought a building. "I invested 100 percent of my time into airplanes," he said.

Flying airplanes was a hobby; but running an airplane-related business wasn't Tom's dream. A horse-owner, Tom also operated a boarding stable for horses. With a life-long love of horses, Tom wanted to enter the world of adventure vacations—he wanted to run a dude ranch in Colorado.

"There comes a time," he said, "when you have to decide if you are going to keep on dreaming or live your dream."

Welcome to Colorado

Tom researched potential opportunities for dude ranches and purchased The Balloon Ranch near La Garita. He bought the property in 2000. Not quite a year into the ranch's development, on September 11, 2001, tragedy struck.

Tom and Marie Pescatore have two children, Jesse (9) and Belle (5½). The couple moved to the Valley from Luxembourg; Tom in 2001 and Marie in 2004. For the first year of their marriage, they operated The Balloon Ranch, a dude ranch near La Garita. For the past 9 years, they have run Ecodynamics. Ecodynamics specializes in both metal fabrication and intelligent irrigation system design. Tom holds a Colorado license for pump installation.

"Yes, 911 was a shock to the dude ranch business; but, it wasn't the only reason the industry declined," Tom said. "In 2000, there were only four or five cruise ships offering a few trips each a year. Within just a few years, dozens of ships offered trips year round. Cruise ships killed the dude ranches," he said.

In 2004, Tom's wife-to-be, Marie, arrived in the U.S. to join him at The Balloon Ranch. Marie said, "I had two horses in Luxembourg, an Arab and an Andalusian stallion. I boarded them at Tom's stable and that is how I met Tom."

Bringing horses from Europe to the U.S. is an involved process. Marie transported only her stallion, Kefir, to Colorado. Tom helped; he knew the ropes on bringing horses to the U.S. He had brought over 11 for the ranch.

Tom and Marie ran the ranch for another year; but once again, Tom saw a need to change career paths. "I wanted to stay in the Valley," Tom said. Now married, Tom and Marie also had their first child. "So I bought a building and went back to engineering." Ecodynamics came into being.

The mechanical shop

Located between Monte Vista and Alamosa on 160, Ecodynamics fully occupies an 180,000 sq. ft. complex of re-purposed potato warehouses. Five years ago, Tom and Marie purchased Irrigation Engineering. Today, the company's business is divided between mechanical work and irrigation work.

The mechanical shop includes a large laser cutter formerly owned by Sandra Bullock's ex-husband, Jessie

Continued on page 4





Loren Howard, CEO SLVREC

Technology—Love It or Leave It?

It is hard to ignore the change in our world brought on by 'technology.' Virtually everyone has a cell phone, most have a 'smart phone.' It offers a convenience that mostly improves our lives, though sometimes it can be an intrusion. Computers, in their many forms, and the Internet have likewise changed our access to information. Not long ago, I was able locate a person from my past after almost 50 years of not knowing where he lived or how to contact him. I was able to do that with the help of an Internet people search, Facebook and email. The benefit that I received far outweighed the annoyance that technology sometimes afflicts.

Just like in our personal lives, SLVREC uses technology to improve the services that we deliver to you. The operation of SLVREC's electric distribution system relies heavily on the advances in technology to improve the reliability of the electric system. We currently have a SCADA (System Control and Data Acquisition) system that is used to

monitor and operate our electric system—opening and closing breakers in substations as necessary to perform maintenance without requiring a power interruption to you. The SCADA system we currently have has served us well, but will soon be replaced with a newer system that will allow much more information to be monitored and analyzed. The installation of fiber optics to our substations is the technology that will enable the new SCADA system to collect and monitor, in real time, information and data crucial to improving system operations.

There is another emerging technology in the electric industry—distribution automation. SLVREC's service territory is quite large covering about 3,000 square miles. Responding to a downed power line and associated power outage can easily take an hour or more. Often, one of the quickest ways to restore power is to simply switch around the problem, but currently, this is a 'manual' process requiring operations personnel to evaluate line loadings and then travel to various locations to open and close the required switches and breakers. With distribution automation, the switching around the outage is performed by intelligent equipment that

knows line loadings and can calculate switching options. This technology can reduce outage times from hours to seconds and is enabled by the installation of fiber optics.

Another electric system upgrade that will provide members with improved service is the Advanced Metering Infrastructure (AMI) system that will be installed over the next two years. Not only will this provide each member with access to your individual energy consumption at your convenience, the AMI system provides information to our Outage Management System (OMS) that provides real information and notification on outages.

Overall, these new projects will provide significant improvements to the reliability of SLVREC's system and provide you with new, more efficient methods to manage your electric usage and costs.



Your Touchstone Energy® Cooperative 
The power of human connections®

SLVREC's offices are open from 7 a.m. to 5 p.m. on Monday through Thursday. Offices are closed Friday through Sunday.

Board of Directors

Scott Wolfe, President	719-852-0966
Cole Wakasugi, Vice-President	719-379-2629
Ernie Ford, Secretary	719-588-0255
Carol Lee Dugan	719-852-5412
Rick Inman	719-658-2455
Mike Rierson	719-754-2588
Eleanor Valdez	719-274-5680

E-mail power@slvrec.com
Your e-mail will be forwarded based upon the direction you provide in your message.

CEO

Loren Howard	719-852-6630
SLVREC Office (toll free)	800-332-7634
SLVREC Office (local calls)	719-852-3538

Scheduled Meetings

Board Meeting june 24, 9:30 a.m.
The Board of Directors meet the last Tuesday of each month unless otherwise stated. Members are welcome.

This institution is an equal opportunity provider.

Statement of Publisher

The Newsboy (publication #551-450) is an official publication of the San Luis Valley Rural Electric Cooperative, Inc.; 3625 US Hwy 160 W.; Monte Vista, CO 81144. The *Newsboy* is published monthly for SLVREC's members. Periodical postage paid at Monte Vista, CO 81144. Subscription price \$20/year. Postmaster, send Form 3579 to NEWSBOY, P.O. Box 3625, Monte Vista, CO 81144-3625.

© 2014 San Luis Valley Rural Electric Cooperative. All rights reserved.

Monroe Johnson Accepts Job

Monroe Johnson grew up in central Kansas, where he began his career in telephony. "I started work at the telephone company in the town I grew up in. I worked for Moundridge Telephone Company for 13 years."



Almost 15 years ago, Monroe and his family moved to Idaho near Boise where he took a job with CenturyLink. In 2008, Monroe and his wife Lisa moved to the San Luis Valley with their four daughters, Amanda, Andrea, Rebecca and Leah. For the past 6½ years, he worked as CenturyLink's area plant supervisor in the Valley.

Monroe said, "There were two jobs that appealed to me in the Valley. One was working for CenturyLink, the other was working for San Luis Valley REC. Now, I have been able to work for both."

Monroe will serve as the cooperative's telecommunications specialist. In this job, he will help facilitate the build out of the cooperative's fiber optic network and the deployment of phone and internet service to our members.

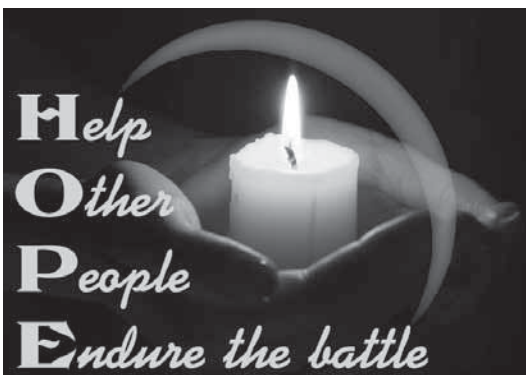
"I'm very excited about the opportunity to help build something from the ground up," he said. "I've always had a lot of respect for SLVREC and I really believe in the way the cooperative is deploying fiber optic-based broadband service. I believe an all-fiber network will provide the best customer experience, period."

"I enjoy working with the folks here and look forward to helping build a state-of-the-art broadband and phone system." ☺

Relay for Life

On July 11 at Cole Park, SLVREC "Team Hope" will help raise funds for cancer research, increase awareness on ways to reduce cancer risk and honor cancer survivors.

Won't you join SLVREC by supporting your electric cooperative's team, walking with us or purchasing a lumanaria? Sign up today online at www.relayforlife.org. ☺



Advanced Meters on the Way!

Advanced meters will offer new technologies to help SLVREC serve members better! SLVREC will work in conjunction with UPA (Utility Partners of America) and Leidos on the upgrade.

500 meters in an area west and slightly north of Monte Vista will be replaced in the initial deployment. Members with these meters will be notified of the upcoming meter replacement via a postcard in the mail and an automated phone call. SLVREC plans to replace all meters within the next two years.

Members need not be on-site for the meter installation. When the meter is installed, there may be a brief power interruption. In some cases, some electronic devices may need to be reset. The new meter will not change electric rates or rate class. The upgrade will increase reliability and will help members manage costs and energy consumption.

Advanced meters offer many technological benefits:

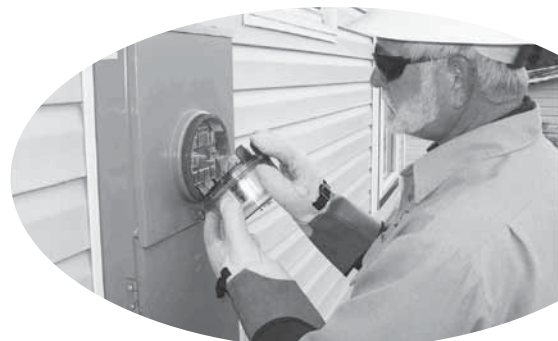
- Locating and responding to outages will be faster and safer. Members are still encouraged to report outages, 24/7 by calling SLVREC.
- The new AMI system will replace a previous automated system. This will save time and money through improved efficiency.

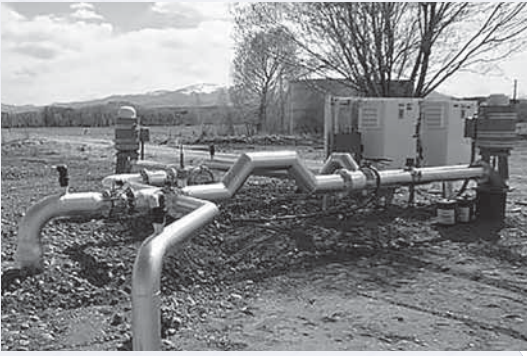
Furthermore, the new advanced meters will be able to

New advanced meters will be able to provide members with more detailed information about their electric use.

provide members with more detailed information about their electric use. This additional data will help the cooperative work with members in identifying causes of unexpected high bills. It will also help members pinpoint actions that impact their electric bills.

Questions? Call customer service at 719-852-3538 or 800-332-7634. ☺





An irrigation system that maximizes use of surface water and minimizes the use of well water. The system will pay for itself in about 7 years via energy and water savings.

Ecodynamics: Continued from page 1

designed a well-sweep to help rid wells of bacteria. Tom

frequency drives programmed for a soft start to avoid power surges and protect the well environment," he said. "Where surface water is a component of the irrigation system, we look at ways to minimize evaporation and seepage."

said, "They came to me to improve the design. We re-engineered it and they have been very happy with the results."

More ideas than time

Tom also has a few more irons in the fire including a roll-off truck bin system designed with landscapers in mind. "I just can't find the time to expand that aspect of the business right now," Tom said. A near-complete prototype sits in a corner of the shop. "It's 96 percent complete."

James (motorcycle builder and Monster Garage host). Brandon Cleghorn, machinist who operates Ecodynamic's laser cutter and the shop's Trumpf Press Brake, a precision metal-bending machine, said, "When Tom bought the laser cutter, it had very little operating time on it."

In addition to being able to fabricate precision metal parts for others, the shop also produces several of Tom's own innovations. Tom can look at something and envision how it can be improved, made more reliable or produced less expensively. He builds prototypes, works out bugs and creates production processes that rival competitors.

The device flushes bacteria-killing chemicals through the well and surrounding gravel pack. Ecodynamics also uses the well-sweeps with good results. Now, others are trumpeting the design. Additionally, Tom researched the problem of well bacteria and has figured out ways to help limit bacterial regrowth after cleaning.

A licensed pump installer, Tom works with Valley farmers to improve field water pumping systems. "We start with a careful evaluation of the water situation in a customer's field or combination of fields. Then we re-engineer the system from scratch. We do that because almost all of the field water systems were built 60 or more years ago when water was plentiful and energy was cheap. Neither is the case today. We design systems that pay for themselves in water and energy savings."

When he sees something that looks like it can be improved, the wheels in Tom's head start turning. "I stay awake at night thinking about how to re-engineer things," he laughs. Tom continually studies, reads and talks to professionals to learn as much as he can about the projects he works on.

For example, Tom saw that Valley potato farmers and warehouses used conveyor systems. He looked at existing designs and identified weak points. His conveyor rollers are less-resistant to breaking and the conveyors have a self-truing design that reduces cost and conveyor wear. He said, "We can make these in any width or for any custom needs—including cutting in the customer's logo or name."

"The Valley depends upon agriculture," he said. "We all have to do what we can to support this industry to help the Valley survive. I see my mission as one to keep farmers pumping. We need reliable solutions to the challenges we face." ☺

The mechanical shop includes what Tom describes as "the largest paint booth in Southern Colorado." Big enough to fit a semi, the down-draft booth was designed for high-quality jobs and can be divided to conserve energy on smaller jobs.

Tom's flexible irrigation systems respond to changing irrigation needs and water levels over a season. "I call these flexible and smart systems. The pumps use smart controllers with variable



Irrigation engineering

The mechanical shop supports the irrigation side of the company. For example, the Bureau of Reclamation

Above: Inside the shop's large paint booth, Tom shows how easy it is to install glides on a potato conveyor. Below: Brandon Cleghorn at the controls of Ecodynamics' laser cutter. Together with the press brake, Ecodynamics can fabricate custom metal pieces to any shape or purpose.



Rare Things Turns 40

Jennifer Inge, artist and owner of Rare Things Gallery, celebrates her 40th year in Creede this summer with an outstanding calendar of events. The celebration kicks off on June 25 at the Creede Chute-Out Bull Riding Series.

Rare Things Gallery has set aside July 8 to 13th as 40th Anniversary Celebration Week. Highlights include an unveiling of new works on July 8, a studio tour on July 9 through 11, and a full moon dancing party with music by The Rifiers on July 12 at the Creede Elks (starting at 8 p.m.).

Celebrations will continue throughout the summer and will culminate on December 31 with another dance at the Creede Elks with music by The Rifiers.

Why has Inge scheduled not one, but two dances and so many other celebratory events? Against all odds, 40 years ago, Inge decided Creede was the best location for an art gallery for her work and the work of other artists. She made that decision even though Creede's economy was faltering as the price of silver plummeted to record lows that year.

She said that as soon as she rode into town on her motorcycle, she felt drawn to the community. So, she set up shop for her custom horsehair jewelry line.

Two years before her move to Creede, in 1972, Inge had set up a tiny shop with only a single showcase on the outskirts of Dallas. There she designed jewelry and sculpture at her workbench as customers looked on, selling faster than she could create. This experience under her belt, she knew better opportunities awaited her.

In an interview a few years ago she said, "Though Creede seems an impossible place to grow a business, I feel a direct line to the Creative Source here—I could not lead a richer life."

Inge has worked hard to make Rare Things an all-season destination gallery. She employs eight people year-round, and up to 15 at the peak of the summer season. The gallery has an outstanding reputation for offering an interesting and eclectic collection of jewelry, antiques, decorative arts, photography, paintings, stained glass, pottery, woodwork, furniture, rocks, minerals and wonderments of nature.

Over the past 40 years, Jenny Inge has developed a well-deserved reputation as an exceptional equestrian, trail blazer, builder and friend. Come join Inge at Rare Things in celebration of 40 years of success! ∞



Lightning Safety Awareness Week

Everyone and everything has a week. Why not lightning? You may chuckle; but, know that lightning is a serious issue in Colorado. That's why the National Weather Service set June 22 to 28 as Lightning Safety Awareness Week.

Between 2003 and 2012, Colorado ranked second in the country in lightning-caused fatalities. Protect yourself from lightning by following the safety adage, "When thunder roars, go indoors!"

Going indoors can protect you; but what about your house and connected electronic equipment? High quality surge protectors are a good defense. However, even a good surge protector will not withstand a direct lightning hit to a nearby power pole. Use surge strips; but, for the best protection of connected equipment, when you hear thunder nearby, unplug surge strips to sever the connection to your home's electric system for the duration of the storm.

Using surge strips year round for televisions and

connected antennas and computers and peripherals can also save money. Any electronic device with a remote or with LED lights that shine even when the device is off uses power when it is plugged in.

This standby power consumption is small per device. Lawrence Berkeley National Laboratory estimates that any single device may only cost about \$5 a year in standby power use. However, walk through your home in the dark and count the shine of LED's. If your home is like most, you can see that collectively, the power consumed can add up.

Wherever you have a cluster of devices in one location, cut standby use and make it easy to protect these devices during electrical storms by connecting them to a surge strip with a good connected equipment insurance policy. Flip the switch to cut standby power consumption when connected electronics aren't in use; pull the plug when thunder roars to protect devices from potential lightning damage.

Farm Safety Day

Do you have a third grader who had a chance to attend Monte Vista Co-op's Ag Safety Day? If you do, no doubt you heard some great stories the evening of May 8th.

Ray Martinez and Dave Mixa, presenters of SLVREC's high voltage electric safety demonstration, reported that over 250 students representing eight Valley grade schools took part in the event.

SLVREC's high voltage safety program always gets a great response from school kids. Students learn about the dangers of electricity, what to do if they encounter a down power line, and even a little bit about how electricity works.

If you haven't had a chance to watch 3rd or 4th graders attend one of SLVREC's high voltage safety demonstrations, you might be surprised at how attentive the 7 and 8 year



old's are during the program. The safety demonstrations offered by SLVREC provide a safe, controlled setting for learning and most children are captivated when they see the power of electricity in real life.

Above, Ray Martinez, journeyman lineman, shows a fiberglass pole called a hot stick to one of the groups who watched the presentation on Farm Safety Day. Hot sticks help insulate a lineman from electrical currents.

The table-top display used for teaching about high voltage power to school children includes a model of a home and a barn. On the left, Ray is telling a true story about a powerline accident that happened in the Valley and how it could have been avoided.

SLVREC begins educating children about electrical safety with the Louie the Lightning Bug program. That program is held in classrooms for first graders.

The cooperative also offers high voltage demonstrations to adults using a portable high voltage demonstration trailer. Safety demonstrations can be tailored to your organization or group's needs. Just call to make arrangements! ☺



Irrigators:

If you have made changes on an irrigation account that could affect billing, please let SLVREC know right away.

When you call, you will need to have the information of the responsible billing party on hand including the name, address and phone number of the individual or farm to be billed for the account. SLVREC will only do an adjustment on one month's billing if no payment has been applied to the account. You will need the meter number of the account you wish to change. You can find that number on bills and on the meter.

Any changes made to connected horsepower will be effective the date SLVREC verifies the new horsepower. No adjustments will be made to previously billed statements. Please note that all disconnect policies, including late fees and trip fees, apply to irrigation accounts. ☺

Digital Newsboy Winners!

Congratulations to **Bill and Nancy Blackford** winners of a \$25 bill credit in our monthly digital Newsboy drawing. By signing up for the digital Newsboy and stopping your snail mail subscription to the newsletter, you can help your cooperative save on printing and postage. Plus, you get a chance to win in the monthly drawing! Sign up online! Visit www.slvrec.com.

Zucchini Dip

- 1 med. zucchini
- 1 cup plain yogurt
- 1 minced clove garlic (or 1/8 tsp. garlic powder)
- 1/2 tsp. curry powder
- dash cayenne
- salt to taste
- sliced raw vegetables (such as carrots, celery or cucumber)

Finely shred zucchini. Place in strainer and press out moisture. Blend with yogurt and garlic. Add seasonings. Chill. Stir before serving.

Hummus

- 1 15 oz. can garbanzo beans, drained
- 1/3 cup tahini (ground sesame seed paste)
- 1/4 cup fresh lemon juice
- 1 tsp. salt
- 2 garlic cloves, halved
- 1 Tbsp. olive oil
- 1 pinch paprika
- 1 tsp. fresh parsley, minced

Place the garbanzo beans, tahini, lemon juice, salt and garlic in a blender. Blend until smooth. Drizzle olive oil over the mixture. Sprinkle with paprika and parsley. Serve with vegetable slices or crackers.

Avocado Mango Salsa

- 1/4 cup hot jalapeno jelly
- 1/4 cup fresh lime juice
- 1 lg. avocado, diced
- 1 lg. red bell pepper, diced
- 1/4 cup chopped fresh cilantro
- 2 mangoes, peeled and diced

Whisk together jelly and lime juice in a large bowl. Add remaining ingredients and stir until blended. Cover and chill before serving.

Olive-oil Braised Vegetables

- 1/2 cup olive oil
- 1/4 lb. baby carrots, sliced
- 1/4 lb. baby potatoes, sliced
- 2 baby fennel, trimmed & sliced

- 1/4 tsp. fine grain sea salt
- 6 small scallions, trimmed
- 1/2 lb. asparagus, cut into 1-inch pieces
- 1 lemon, cut into wedges

Note: Substitute any vegetables that are in season.

Add olive oil to a large skillet over medium-low heat. Add long-cooking vegetables to the pan first (carrots, potatoes, and fennel) along with salt and cook for a few minutes. Add onions, then cover and cook for another few minutes.

A minute before the carrots and potatoes are cooked, add asparagus and a few lemon wedges to the pan. Cook just until asparagus turns bright green and is barely tender. Remove from heat and sprinkle with herbs (dill or thyme). Serve with the remaining lemon wedges on the side.

Serve over pasta tossed in olive oil, cooked rice or other grains.

Grilled Chicken Salad

- 2 lbs. assorted seasonal garden greens
- 6 boneless chicken breasts
- 1 Tbsp. thyme
- 1 lemon zest
- 6 sprigs chives, chopped

Vinaigrette:

- 1 cup sherry vinegar
- 2 lemons, juiced
- 1 shallot, finely minced
- 1 Tbsp. fresh oregano, chopped
- 1 Tbsp. fresh basil, chopped
- 1 cup extra virgin olive oil
- 2 Tbsp. honey
- salt and pepper to taste

To make vinaigrette dressing: Place all ingredients in a bowl except olive oil. Slowly whisk olive oil into mixture until emulsified. Chill.

Wash lettuce. Marinate chicken with herbs, lemon zest and olive oil. Season with salt and pepper and grill.

Place salad greens in a bowl and toss with dressing. Distribute salad onto 6 serving plates. Slice grilled chicken breasts into 1/2-inch strips and place one sliced chicken breast over each salad. Serve immediately.

Red, White, and Green Salad

- 1/2 small head of cauliflower
- 1 small bunch broccoli
- 1 tomato
- 1/4 medium red onion
- 3 to 4 Tbsp. Italian dressing

Cut cauliflower and broccoli florets off main stems. Peel the woody skin off the broccoli stems and dice interior. Dice cauliflower stems into small pieces. Place broccoli and cauliflower together in a vegetable steamer and steam until crisp-tender.

Dice tomatoes and slice onion into thin slices. Place in a salad bowl with the cooked broccoli and cauliflower. Toss with dressing. Serve warm or chilled.

Lamb Chops with Potatoes

- 4 lamb loin chops, 1 1/2-inches thick
- 1 lb. quartered new potatoes
- olive oil, to taste
- salt and pepper, to taste
- 2 garlic cloves, thinly sliced
- 3 fresh rosemary sprigs

Generously season the potatoes and lamb with oil, salt and pepper. On a rimmed baking sheet, roast potatoes at 425 °F for 20 minutes.

In a large skillet, brown lamb over high heat on both sides, 5 to 6 minutes total. Add the chops to the baking sheet with potatoes; continue to roast until the chops are medium-rare, 2 minutes longer.

Add garlic and rosemary to the fat in the skillet; toast over medium heat until fragrant, about 2 minutes. Pour the seasoned oil over the chops and potatoes. Serve piping hot.

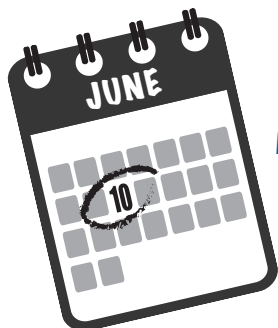


**PO Box 3625
Monte Vista, CO 81144**

Staying Connected

In this Issue:

- Ecodynamics**
- Technology—Love It or Leave It?**
- Monroe Johnson Accepts Job**
- Advanced Meters on the Way**
- Relay For Life: July 11**
- Rare Things Turns 40**
- Lightning Safety Awareness Week**
- Farm Safety Day**
- Irrigation Reminder**
- Digital Newsboy Winner**
- Easy, Healthy, Summer Recipes**



**Don't miss
Annual
Meeting on
June 10!**

June 2014

Don't Miss the Radio Show!

Earlier this year, SLVREC began improving the ways the co-op communicates with members. SLVREC launched a Facebook page and Twitter feeds to initiate a dialogue with the community. Additionally, the cooperative rolled out a radio show, Power Up, to keep members and local communities up-to-date on industry issues.



Power Up airs every Thursday morning at 8:40 a.m. on KYDN, 95.3 FM. Listen in to hear more about San Luis Valley REC, the utility industry, programs at your cooperative and much more! Check out the June show schedule and be sure to tune in on Thursday mornings!

Power Up Radio Show Schedule

6/5/2014	Rotary Rainbow Roundup Fishing Derby	Molly Mendez, President of Rotary Club for Monte Vista will talk about the fishing derby, free fishing weekend, prizes (including a fishing boat) and more!
6/12/2014	SLVREC Co-op Connections Program	Cheryl Jones, program coordinator for SLVREC's Co-op Connections Program, will talk about program benefits to members and businesses.
6/19/2014	Call Before You Dig	Monroe Johnson, SLVREC telecommunications specialist, will discuss the new on-line request system for Call Before You Dig.
6/26/2014	Safe Electricity Program	Mona Neeley, Editor of <i>Colorado Country Life</i> and representative of CREA (Colorado Rural Electric Association) will talk about the Safe Electricity Program.